

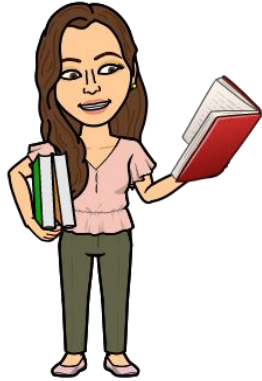


# Back to School Night

---

Timber Lane Elementary

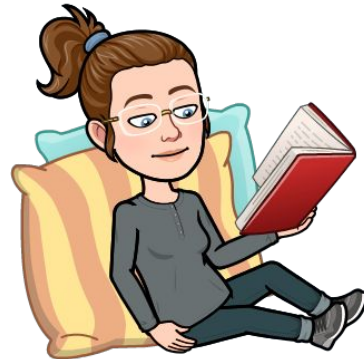
# Teacher Introductions



## Ms. Maslowe

[memaslowe@fcps.edu](mailto:memaslowe@fcps.edu)  
TP Code: VXHW9Z

- 2 Years at Timber Lane, 4th year teaching
- I enjoy baking and going on walks.
- Favorite part of second grade is Reading



## Mrs. Helfrich

[emhelfrich@fcps.edu](mailto:emhelfrich@fcps.edu)  
TP Code: NOXYX2

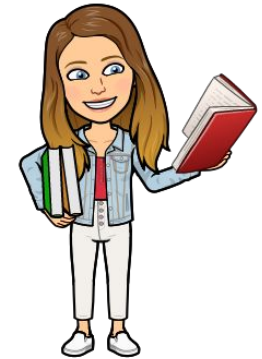
- 6 Years at Timber Lane, 2nd Year Teaching 2nd Grade
- Has a Chinchilla named Soot.
- Favorite part of second grade is Science



## Mrs. Bates

[rbates1@fcps.edu](mailto:rbates1@fcps.edu)  
TP Code: HH62BR

- 11 years at Timber Lane, 18 years teaching 2nd grade
- love listening & performing music
- favorite part of second grade is writing



## Ms. McClaugherty

[eamcclaugher@fcps.edu](mailto:eamcclaugher@fcps.edu)  
TP Code: 9HWXNW

- 2 Years at Timber Lane, 1st year teaching 2nd Grade
- I love to read!
- Favorite part of second grade is Math and Reading

# Back to School Night Purpose & Goals

- Welcome families to the school community and foster a school-family partnership for the 2021-22 school year
- Provide timely information about the curriculum, daily schedule, learning expectations, school routines & procedures, family resources and supports to help your child be successful
- Learn more about your child's classroom experience from teachers and school staff members

# Overview of the Curriculum

# Portrait of a Graduate



Communicator



Collaborator



Ethical and  
Global Citizen



Creative and  
Critical Thinker



Goal-Directed  
and Resilient  
Individual

A goal of FCPS is to provide opportunities for students to demonstrate learning in authentic ways and support students in the development of skills that employers are seeking for the workforce and are a necessity to be successful in the virtual learning environment and day-to-day life.

***Who do we want our  
students to be?***

**Communicators**

**Collaborators**

**Ethical & Global Citizens**

**Creative and Critical Thinkers**

**Goal-Directed and Resilient Individuals**

# The Learning Model outlines the FCPS instructional vision ensuring all students reach **Portrait of a Graduate** outcomes.

As educators:

- We establish a **learner-centered environment** focused on relationships. Our classroom and school community is inclusive and culturally responsive.
- We plan through a **concept-based curriculum** with a focus on essential knowledge and skills that can be applied across subjects and in real life settings.
- We teach through **meaningful learning experiences** that encourage students to collaborate, communicate and engage in relevant and rigorous tasks.
- We **purposefully assess** students with a focus on continuous growth. Students demonstrate knowledge and skills in a variety of ways, such as tasks, projects, tests, and open-response questions.



# Digital Citizenship

*Supporting students in developing positive Digital Citizenship skills is a shared responsibility.*



MEDIA BALANCE & WELL-BEING

*We find balance  
in our digital lives.*



DIGITAL FOOTPRINT & IDENTITY

*We define  
who we are.*



PRIVACY & SECURITY

*We care about  
everyone's privacy.*



RELATIONSHIPS & COMMUNICATION

*We know the power  
of words & actions.*



CYBERBULLYING, DIGITAL DRAMA  
& HATE SPEECH

*We are kind  
& courageous.*



NEWS & MEDIA LITERACY

*We are critical  
thinkers & creators.*

## Home Supports

**Many supports for families are available on the FCPS Digital Citizenship website:**

**[bit.ly/FCPSdigcitpublic](https://bit.ly/FCPSdigcitpublic)**

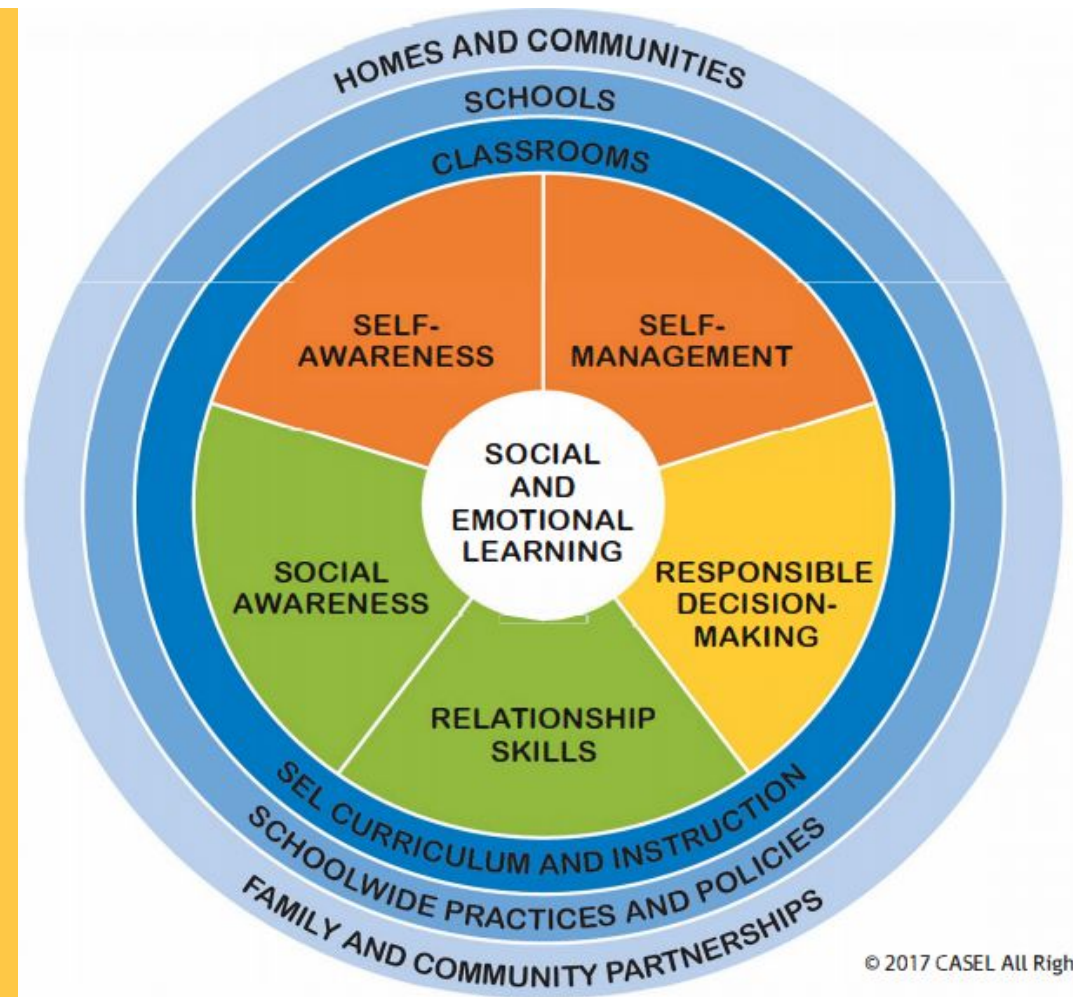
- Establishing Expectations at Home
- Choosing Digital Apps, Games and Services Wisely
- Media Balance and Well-being Toolkit
- Digital Citizenship for Families Online Interactive Course
- Tip Sheets and Videos
- Student Interactives

# Supporting Students with Social & Emotional Learning

**Social Emotional Learning (SEL) is the process through which children and adults:**

- Understand and manage emotions
- Establish and maintain positive relationships
- Set and achieve positive goals
- Make responsible decisions
- Feel and show empathy

**There will be an increased focus on Social Emotional Learning in collaboration with The Collaborative for Academic, Social, and Emotional Learning (CASEL).**



© 2017 CASEL All Rights Reserved



# Advanced Academics

Alyssa Grabel  
Advanced Academics Resource Teacher  
Timber Lane Elementary School  
(703) 206-5325  
[anrabel@fcps.edu](mailto:anrabel@fcps.edu)

**Please check News You Choose and the school website under the Advanced Academics tab for important dates and information.**

All parents/guardians are invited to attend the AAP Levels of Services presentation on September 14<sup>th</sup> at 6pm.

Additionally, parents and guardians of students in grades 2-6 who are interested in the screening and referral process for level IV services should attend the information session on September 22 at 6pm. More details to come!

# Instructional Schedule

# Our Daily Schedule

8:30-8:50	Arrival and Breakfast
8:50-9:10	Morning Meeting
9:15-10:30	Math Workshop
10:30-11:00	Tiger Time and Snack
11:00-12:00	Reading Workshop
12:00-12:30	Lunch
12:30-1:00	Recess
1:00-2:00	Word Study and Writing Workshop
2:00-2:30	Content
2:30-3:30	Specials
3:30-3:40	Dismissal

# Morning Meeting

Morning meeting starts everyday at 9am.

Morning meeting follows a predictable routine that encourages students to learn more about each other and foster a classroom community.

# How will the learning time be structured?

## Reading & Writing Workshop

- Whole group Focus Lesson (*10-15 m.*)
- Differentiated small group instruction (*minutes vary*)
  - Book Clubs or Partner Reading
  - Independent Reading & Writing
- Whole Group Reflection

## Math Workshop

- Whole group Number Sense Routine (5-10m)
- Whole group Focus Lesson (*10 m.*)
- Differentiated small group instruction (*minutes vary*)
  - Collaborative tasks
  - Independent Practice
- Whole Group Reflection

## Science/ Social Studies

- Content may be integrated within Math and Language Arts
- Whole Group-Discussion-based, model investigations, a focus on creative and critical thinking
- Working collaboratively (Project-based learning)

# Digital Resources

These digital programs will:

- Provide opportunities to practice and apply literacy and mathematics skills
- Allow students to work at their own pace and advance to new learning as they are showing mastery
- Support students' independent learning with automatic feedback built in
- Utilized for asynchronous learning to supplement synchronous, live instruction.

**Mathematics  
ST Math**

**Language Arts  
Imagine Learning**

# Grading and Assessments

# Grading and Reporting

## Balanced Assessment Approach

- Projects
- Rubrics specific to assignments
- Tests & Quizzes
- Performance Tasks

*Student understanding is assessed in multiple ways. Each assessment type provides information to guide and inform instruction to meet the needs of students.*

## Parent/Teacher Communication

- Phone Call
- Email
- Progress Update Form
- Office Hours

*Teachers remain in contact with parents throughout each quarter to share and monitor student progress.*

## Elementary Progress Report

- Achievement Grade
- Effort Grade
- Life, Work & Citizenship

*The progress report reflects the student's current level of understanding and demonstration of knowledge and skills.*



# Fall Assessment Highlights

## **iReady Universal Screener:** (1st-6th grade)

- Reading and Math
- Sept 8th-Oct 28th

## **Cognitive Abilities Assessment** (2nd-3rd)

- Oct 12th - Oct 22nd

# Elementary Progress Report Marks

4

**Consistently demonstrates concepts and skills of standard taught this quarter**

- Frequency of behavior, nearly all the time
- Requires no support when demonstrating understanding
- Demonstrates a thorough understanding of content taught
- Makes no major errors or omissions when demonstrating concepts or processes taught

3

**Usually demonstrates concepts and skills of standard taught this quarter**

- Frequency of behavior, most of the time
- Requires limited support when demonstrating understanding
- Demonstrates a general understanding of content taught
- Makes few major errors or omissions when demonstrating concepts or processes

2

**Sometimes demonstrates concepts and skills of standard taught this quarter**

- Frequency of behavior, some of the time
- Requires moderate support in order to demonstrate understanding of concepts and skills
- Demonstrates a partial understanding of content taught
- Makes some errors or omissions when demonstrating concepts or processes

1

**Seldom demonstrates concepts and skills of standard taught this quarter**

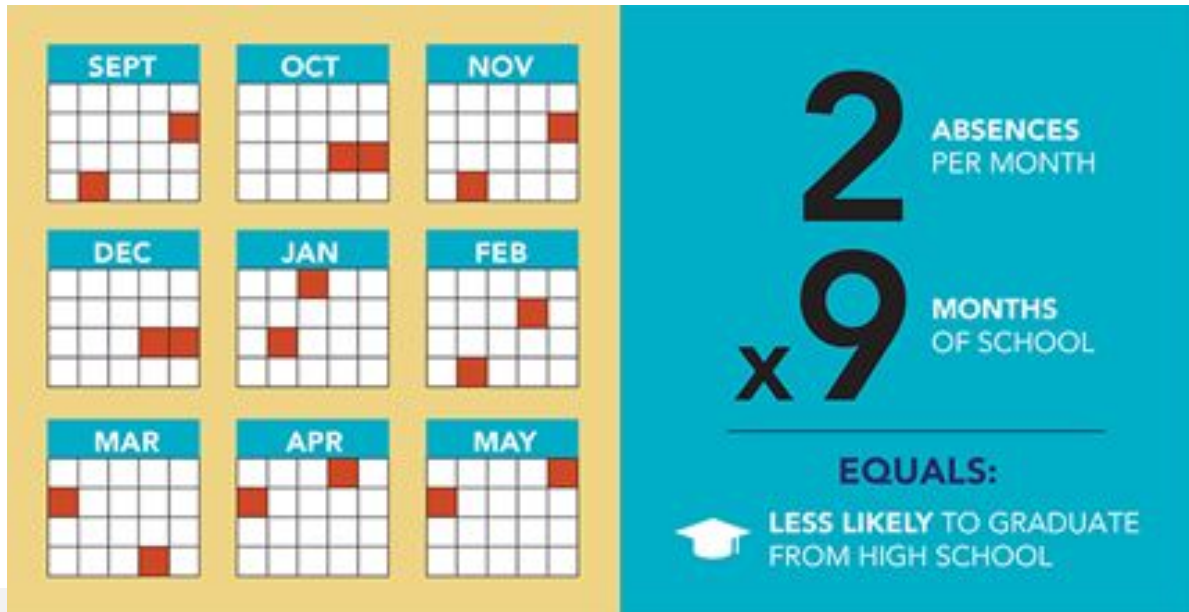
- Frequency of behavior, seldom
- Requires considerable support in order to demonstrate learning of concepts and skills
- Demonstrates limited understanding of concepts, skills, and processes taught
- Makes frequent major errors when demonstrating concepts or processes

# **Schoolwide Procedures, Attendance & Communication**

# Student Attendance

Attendance is taken during morning meeting and monitored throughout the school day, Monday-Friday. The school day begins at 8:50 and ends at 3:35.

Please call the attendance line (703) 206-5331 if your child will be absent, tardy, or leaving early.



## Absences **ADD UP**

ELEMENTARY SCHOOL

MISSING

**18** DAYS IN A SCHOOL YEAR

or **2** DAYS EVERY MONTH

**EQUALS:**

- ↓ LOWER TEST SCORES
- ⊙ RETENTION IN LATER GRADES

\*used with permission of Attendance Works.

# Breakfast and Lunch (and Snack)

Breakfast and Lunch are free for all students this year.

Breakfast is provided as students arrive in the morning through door 2 and 5.

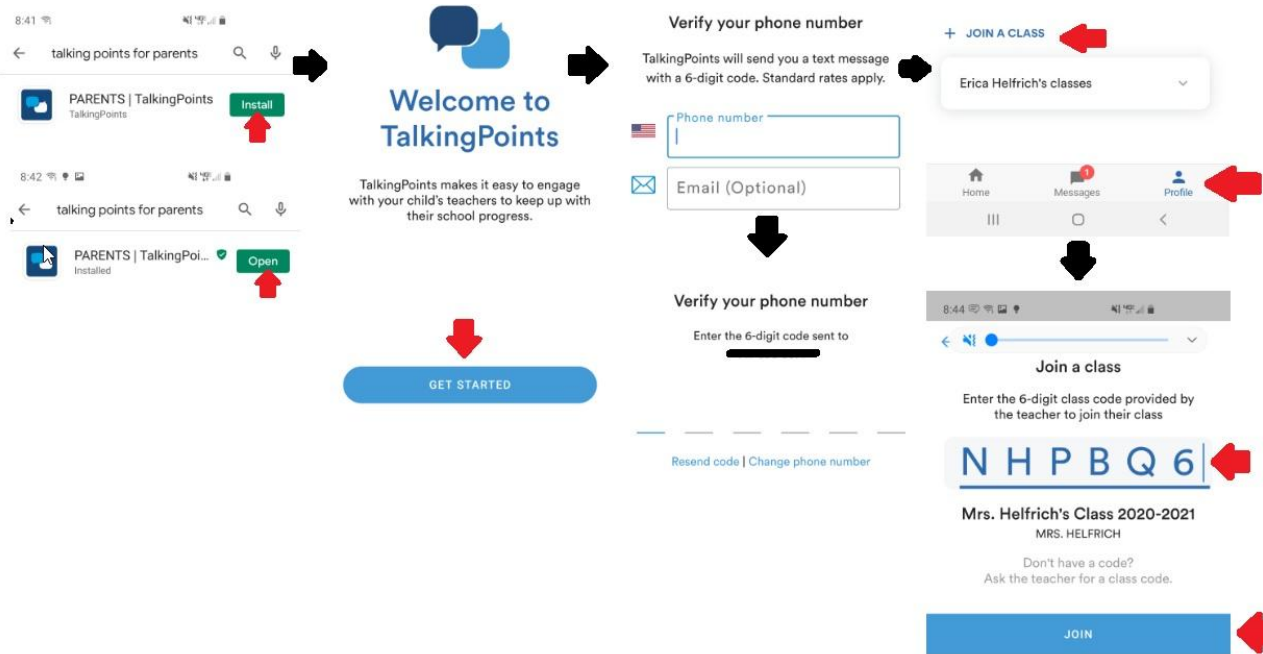
Snack time is during our Tiger Time at 10:30. Please send your student with a snack.

Lunch is at 12:00 for 2nd grade.

# School Communication



# Teacher Communication



Bates: HH62BR

Helfrich: N0XYX2

Maslowe: VXHW9Z

McClagherty: 9HWXNW

# Schoology Information



**2nd Grade**  
**Ms. Maslowe**  
Room 36



Grade 2 Homeroom

Maslowe, M, Grade 2 Homeroom(01)  
Timber Lane Elementary School



Grade 2 Homeroom

Bates, R, Grade 2 Homeroom(01)  
Timber Lane Elementary School



Grade 2 Homeroom

Helfrich, E, Grade 2 Homeroom(01)  
Timber Lane Elementary School



**2nd Grade**  
**Ms. McClaugherty**  
Room #34



Grade 2 Homeroom

McClagherty, E, Grade 2 Homeroom(...)  
Timber Lane Elementary School



# Thank You! Questions?